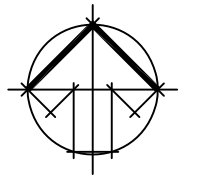
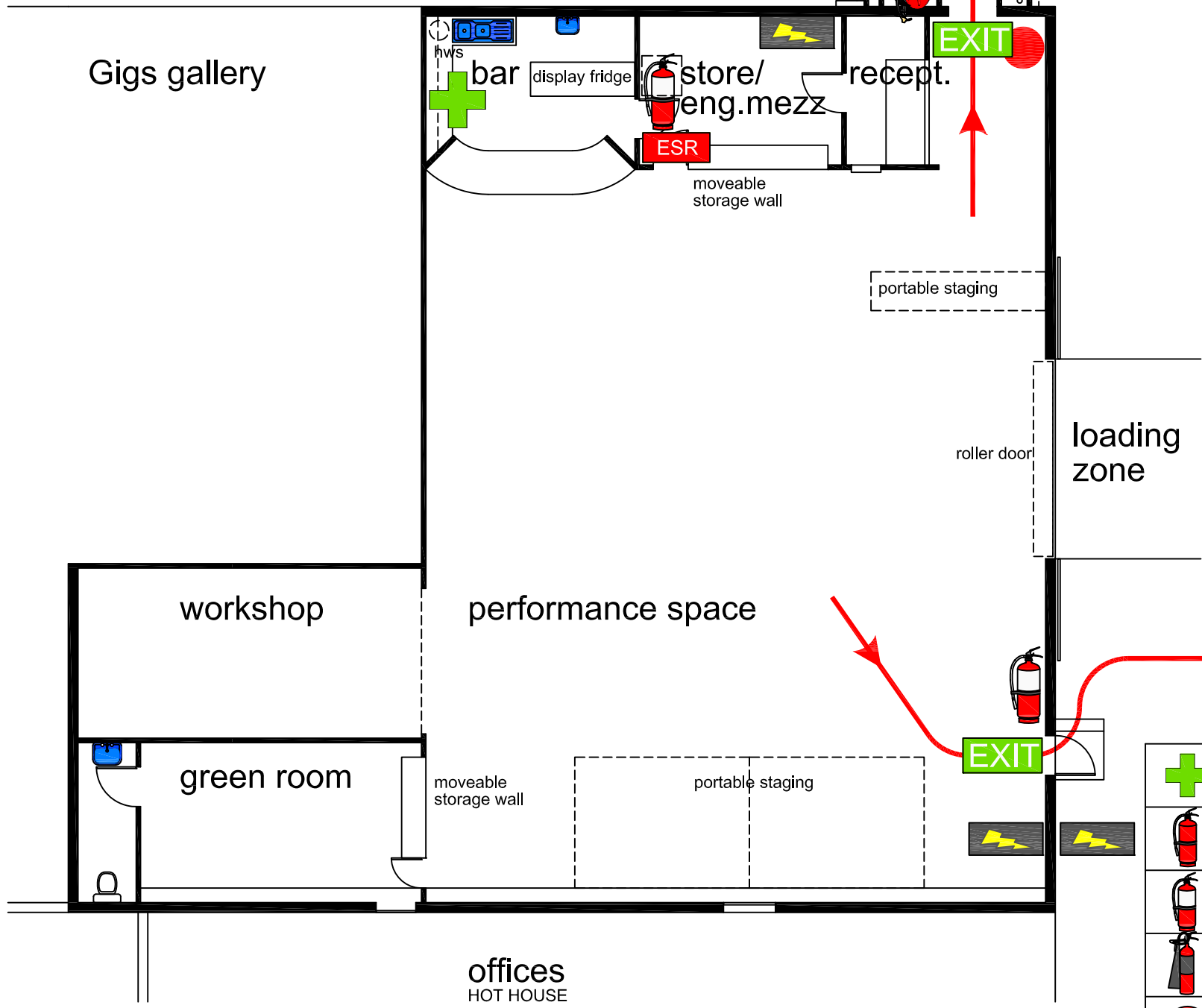
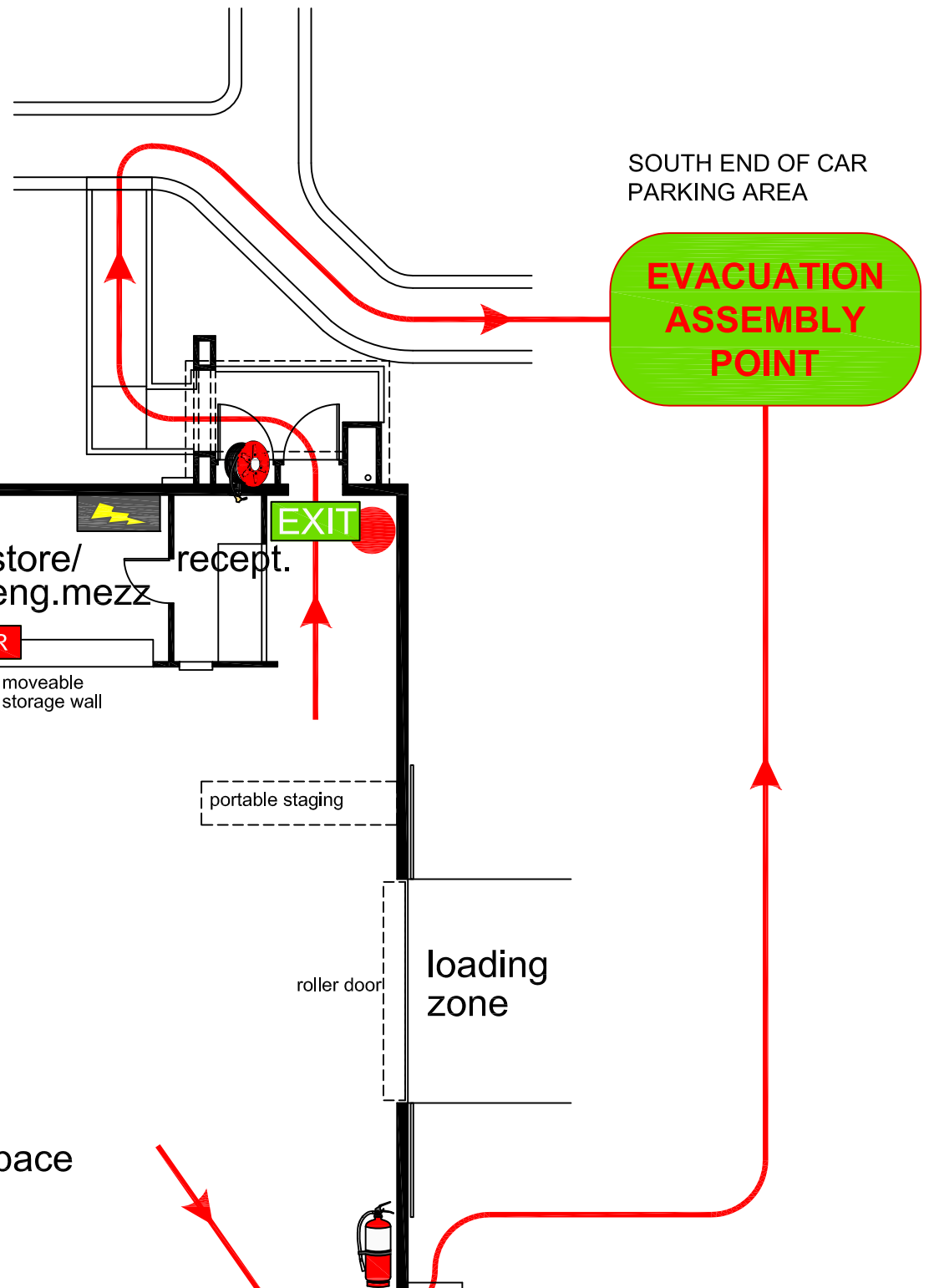


EMERGENCY EVACUATION PROCEDURES

the JAZZ basement

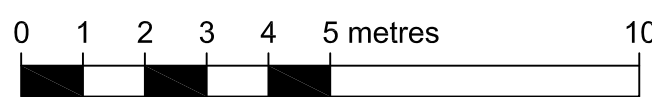


1. WHEN AN EMERGENCY ARISES, TWO INSTRUCTIONS MAY BE GIVEN, NAMELY -
 - a) PREPARE: shut down all vital equipment & the public gather personal equipment.
 - b) EVACUATE: all staff & general public are required to leave the building immediately and assemble in the assigned evacuation areas.
2. PLEASE OBEY ALL INSTRUCTIONS GIVEN BY EMERGENCY PERSONELL. YOUR COOPERATION IS ESSENTIAL AT ALL TIMES.
3. UNDER NO CIRCUMSTANCES SHOULD ANY PERSON RE-ENTER THE BUILDING OR SITE UNLESS INSTRUCTED BY EMERGENCY PERSONELL



	First Aid Kit
	Fire Extinguisher (Water)
	Fire Extinguisher (Powder)
	Fire Extinguisher (CO2)
	Hydrant
	Fire Hose Reel
	Electrical Switchboard
	Essential Safety Register
	Fire Blanket
	Basin/ sink fixture
	Assembly Point
	YOU ARE HERE

IN CASE OF EMERGENCY
CALL 000



COOK DESIGN
BUILDING DESIGNERS
156 LAWRENCE STREET
WODONGA VIC 3690
PH 02 60244055

DRAWN	X
CHECKED	X
ISSUE DATE	X
COOK REF	X



PIPE LEGEND

- FILTERED WATER
- SOILED WATER
- BACKWASH WATER
- CO2
- CHLORINE
- CONFINED SPACE
- PUMP
- FIRE EXTINGUISHER (POWDER)
- YOU ARE HERE

PLANT ROOM PIPE DIAGRAM

PIPE LEGEND

- | | |
|--|--|
| Pump 1 - 25m Pool Circulation Pump | Pump 9 - Spa Pulsar Pump |
| Pump 2 - 25m Pool Circulation Pump | Pump 10 - Spa Heat Circulation Pump |
| Pump 3 - 25m Pool Circulation Pump | Pump 11 - 25m Pulsar Pump |
| Pump 4 - Program Pool Circulation Pump | Pump 12 - Hot Water Service Circulation Pump |
| Pump 5 - Program Pool Circulation Pump | Pump 13 - Program Pool Heat Circulation Pump |
| Pump 6 - Spa Circulation Pump | Pump 14 - 25m Pool Heat Circulation Pump |
| Pump 7 - Spa Jet Pump | Pump 15 - Solar Hot Water Circulation Pump |
| Pump 8 - Program Pool Pulsar Pump | |

BOILER ROOM

